

K-433

SLIDE PLATE FOR NU-STRUT CHANNEL

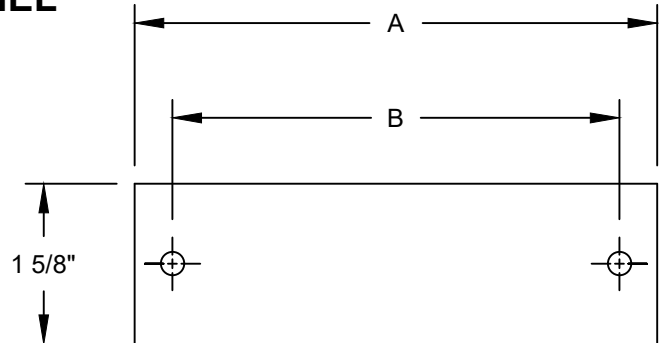
MATERIAL - CARBON STEEL, T-304 & T-316 STAINLESS

FUNCTION - TO SUPPORT PIPE SLIDES USED WITH NU-STRUT CHANNEL. TO ALLOW PIPE TO MOVE FREELY IN THE HORIZONTAL PLANE.

FINISH - PLAIN, ELECTRO-GALVANIZED AND HDG

ORDER BY - FIGURE NUMBER AND SIZE

FLAT HEAD SCREW AND SPRING NUTS PROVIDED



SIZE	A	B	APPROX. WEIGHT PER 100
1	4	3	41
2	8	7	67
3	12	10	93
4	16	14	119
5	20	18	145
6	24	22	171