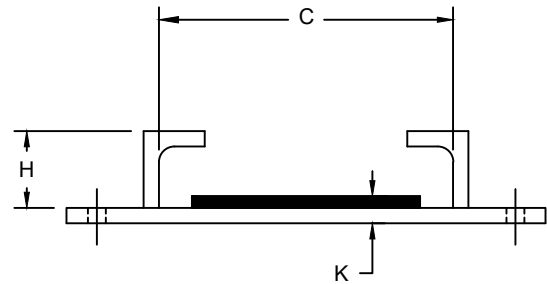


# K-432

## PTFE HOLD DOWN SLIDE PLATE

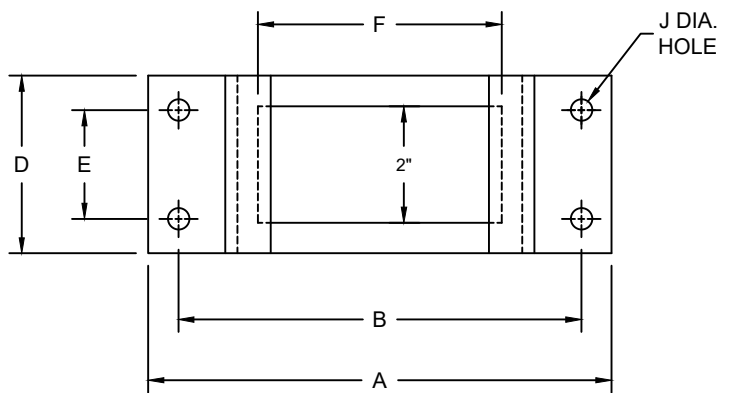


**MATERIAL - CARBON STEEL, T-304 & T-316 STAINLESS**

**FUNCTION - SUPPORTS PIPE SLIDE WHERE ONLY AXIAL MOVEMENT IS ALLOWED. ACTS AS HORIZONTAL RESTRAINT IN ONE DIRECTION. SLIDE PLATE MUST BE ATTACHED TO SUPPORTING BEAM OR STRUCTURE BY BOLTING OR TACK WELDING. THEY ARE NOT STRUCTURAL MEMBERS IN THEMSELVES. USE ONLY WITH PTFE SLIDES.**

**FINISH - PLAIN, ELECTRO-GALVANIZED AND HDG**

**ORDER BY - FIGURE NUMBER, TYPE AND SIZE INDICATE IF BOLT HOLES ARE REQUIRED**



| SIZE | SLIDE WIDTH | A  | B      | C      | D | E     | F     | H      | J     | K    | APPROX. WEIGHT |
|------|-------------|----|--------|--------|---|-------|-------|--------|-------|------|----------------|
| A    | 2-3/4       | 5  | 4-1/4  | 2-7/8  | 3 | 2-1/4 | 2     | 1-7/16 | 5/16  | 7/16 | 2              |
| B    | 3           | 5  | 4-1/4  | 3-1/8  | 3 | 2-1/4 | 2     | 1-7/16 | 5/16  | 7/16 | 3              |
| C    | 4           | 7  | 6      | 4-1/8  | 4 | 3     | 3     | 1-1/2  | 7/16  | 1/2  | 3              |
| D    | 6           | 10 | 8-1/2  | 6-1/4  | 6 | 4-1/2 | 6     | 1-5/8  | 9/16  | 5/8  | 6              |
| E    | 6-1/2       | 10 | 8-1/2  | 6-3/4  | 6 | 4-1/2 | 6-1/2 | 1-7/8  | 9/16  | 5/8  | 12             |
| F    | 8           | 12 | 10-1/2 | 8-1/4  | 6 | 4-1/2 | 7     | 1-7/8  | 9/16  | 5/8  | 13             |
| G    | 10          | 14 | 12-1/2 | 10-1/4 | 6 | 4-1/2 | 10    | 1-7/8  | 9/16  | 5/8  | 14             |
| H    | 12          | 15 | 14     | 12-1/4 | 6 | 4-1/2 | 10    | 1-7/8  | 9/16  | 5/8  | 16             |
| J    | 14          | 17 | 16     | 14-1/4 | 6 | 4-1/2 | 10    | 2-1/8  | 9/16  | 5/8  | 18             |
| K    | 16          | 21 | 19     | 16-1/4 | 8 | 4-1/2 | 12    | 2-1/4  | 11/16 | 3/4  | 21             |
| L    | 18          | 23 | 21     | 18-1/4 | 8 | 4-1/2 | 14    | 2-1/4  | 11/16 | 3/4  | 36             |