

## K-422

### LIGHT WEIGHT PIPE ALIGNMENT GUIDE

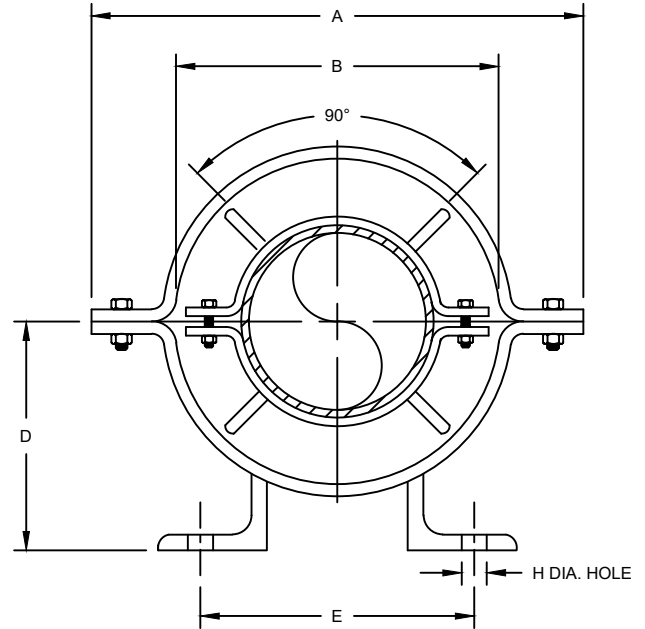
SIZE RANGE - 3/4" THRU 8" PIPE SIZE

MATERIAL - CARBON STEEL, T-304 & T-316 STAINLESS

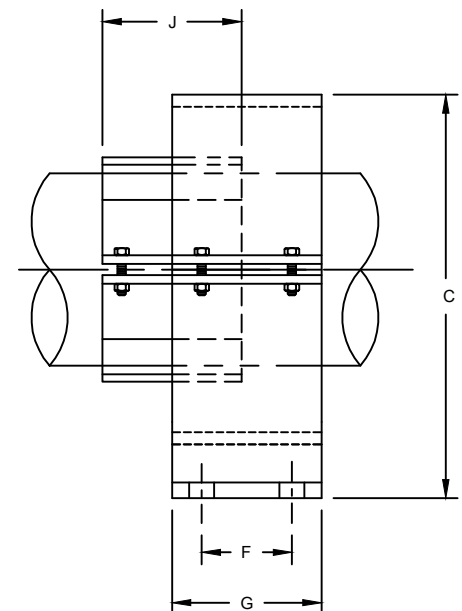
FUNCTION - TO MAINTAIN ALIGNMENT OF PIPING THROUGH  
IT'S AXIAL EXPANSION AND CONTRACTION CYCLES.

FINISH - PLAIN, ELECTRO-GALVANIZED AND HDG

ORDER BY - FIGURE NUMBER, STANDARD PIPE SIZE, AND  
INSULATION THICKNESS. IF OTHER THAN STANDARD PIPE  
IS USED, SPECIFY TYPE AND O.D.



PIPE SIZE	A	B	C	D	E	F	G	H HOLE SIZE	MAX. INSUL. THICKNESS	APPROX. WEIGHT PER 100
3/4	6-5/8	4-3/8	5-5/16	3-1/8	5	1-1/2	3	5/8	1-5/8	400
1	8-1/2	6-1/4	5-5/8	3-1/2	6-1/4	1-1/2	3	5/8	1-5/8	400
1-1/4	8-1/2	6-1/4	5-5/8	3-1/2	6-1/4	1-1/2	3	5/8	1-5/8	630
1-1/2	8-1/2	6-1/4	5-5/8	3-1/2	6-1/4	1-1/2	3	5/8	1-5/8	630
2	8-1/2	6-1/4	5-5/8	3-1/2	6-1/4	1-1/2	3	5/8	1-5/8	630
2-1/2	9-1/2	7-1/4	7-5/8	4	6-3/4	1-1/2	3	5/8	2-1/8	760
3	11-3/4	9-1/2	9-3/4	5	7-3/8	1-1/2	3	5/8	2-1/8	1260
3-1/2	11-3/4	9-1/2	9-3/4	5	7-3/8	1-1/2	3	5/8	2-1/8	1260
4	11-3/4	9-1/2	9-3/4	5	7-3/8	1-1/2	3	5/8	2-1/8	1260
5	13-5/8	10-5/8	11-9/16	6-1/4	7-3/8	2	4	5/8	2-1/8	1260
6	15-5/8	12-5/8	13-9/16	7-1/4	8	2	4	5/8	2-5/8	1920
8	18-1/4	15-1/4	16-1/8	8-1/2	9-3/4	2	4	3/4	2-5/8	2860



PIPE SIZE	J	MAX MOVEMENT
1 to 4	4	4-3/8
1	8-1/2	6-1/4