

K-421

PIPE ALIGNMENT GUIDE

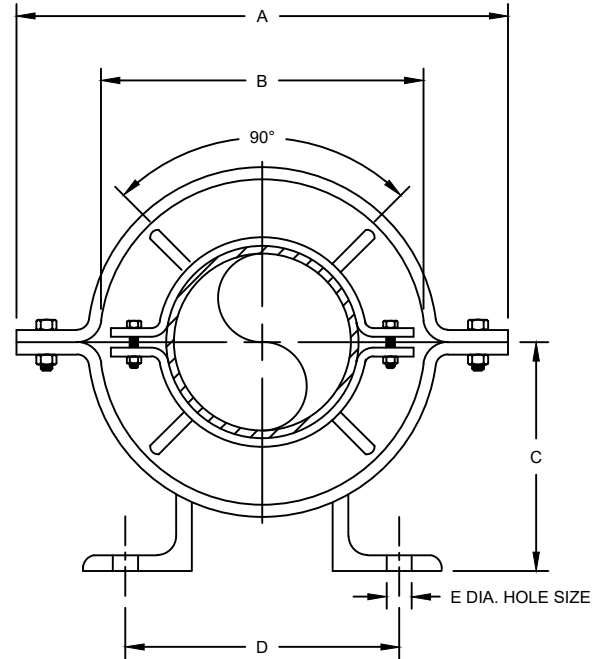
SIZE RANGE - 3/4" THRU 24" PIPE SIZE

MATERIAL - CARBON STEEL, T-304 & T-316 STAINLESS

FUNCTION - TO MAINTAIN ALIGNMENT OF PIPING THROUGH IT'S AXIAL EXPANSION AND CONTRACTION CYCLES.

FINISH - PLAIN, ELECTRO-GALVANIZED AND HDG

ORDER BY - FIGURE NUMBER, STANDARD PIPE SIZE, AND INSULATION THICKNESS. IF OTHER THAN STANDARD PIPE IS USED, SPECIFY TYPE AND O.D.



PIPE SIZE	A	B	C	D	E HOLE SIZE	F	G	MAX. INSUL. THICKNESS	APPROX. WEIGHT PER 100
3/4	8-5/16	4-13/16	4	5-3/4	5/8	2	4	1-11/16	1083
1	8-5/16	4-13/16	4	5-3/4	5/8	2	4	1-9/16	1090
1-1/4	8-5/16	4-13/16	4	5-3/4	5/8	2	4	1-3/8	1213
1-1/2	9-1/4	5-3/4	4-1/2	6	7/8	2	4	1-13/16	1245
2	11-1/4	7-9/16	5	7-5/8	7/8	2	4	2-3/8	1507
2-1/2	11-1/4	7-9/16	5	7-5/8	7/8	2	4	2-1/8	1509
3	11-1/4	7-9/16	5	7-5/8	7/8	2	6	1-3/4	1510
3-1/2	13-1/4	9-1/8	6	7-5/8	7/8	4	6	2-5/16	2443
4	13-1/4	9-1/8	6	7-5/8	7/8	4	8	2-1/16	2494
5	15-3/4	11-1/2	7	10-3/4	7/8	5	8	2-11/16	4122
6	15-3/4	11-1/2	7	11-7/16	7/8	5	8	2-3/16	5055
8	19-5/16	15	9	13-3/8	7/8	5	8	2-15/16	5414
10	21-3/4	17-3/8	10	14-5/8	1-1/8	5	8	2-15/16	6673
12	23-7/8	19-3/8	11	15-1/2	1-1/8	5	8	2-15/16	7290
14	27	20-5/8	12	14	1-1/8	5	8	2-15/16	7818
16	29	22-5/8	14	16-5/8	1-1/8	5	8	2-15/16	9130
18	31-1/4	25-1/4	15	18-3/8	1-1/8	5	8	3-1/4	9924
20	33-5/8	27-1/4	16	18-15/16	1-1/8	5	8	3-1/4	10434
24	36-5/8	31-1/4	17	23-1/4	1-1/8	5	8	3-1/4	11464

