

K-420

LONG TRANSVERSE PIPE ALIGNMENT GUIDE

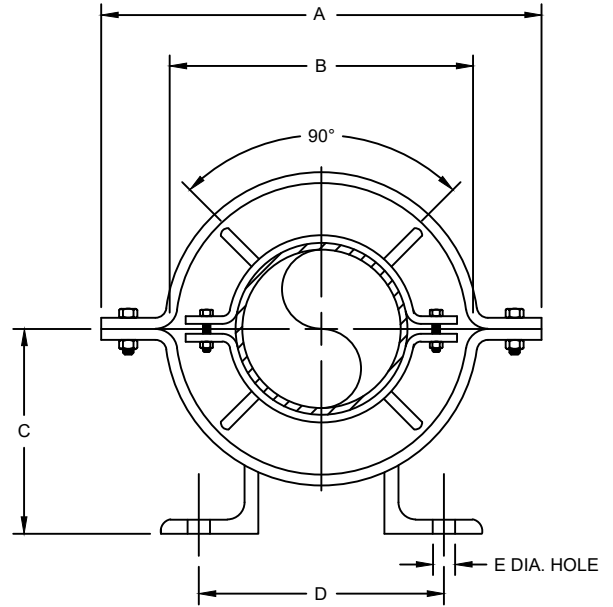
SIZE RANGE - 3/4" THRU 24" PIPE SIZE

MATERIAL - CARBON STEEL, T-304 & T-316 STAINLESS

**FUNCTION - TO MAINTAIN ALIGNMENT OF PIPING THROUGH
IT'S AXIAL EXPANSION AND CONTRACTION CYCLES.**

FINISH - PLAIN, ELECTRO-GALVANIZED AND HDG

**ORDER BY - FIGURE NUMBER, STANDARD PIPE SIZE, AND
INSULATION THICKNESS. IF OTHER THAN STANDARD PIPE
IS USED, SPECIFY TYPE AND O.D.**



PIPE SIZE	A	B	C	D	E HOLE SIZE	MAX. INSUL. THICKNESS	APPROX. WEIGHT PER 100
3/4	8-5/16	4-13/16	10-1/4	5-3/4	5/8	1-11/16	2430
1	8-5/16	4-13/16	11-1/16	5-3/4	5/8	1-9/16	2890
1-1/4	8-5/16	4-13/16	11-9/16	5-3/4	5/8	1-3/8	3261
1-1/2	9-1/4	5-3/4	13-9/16	6	5/8	1-13/16	3257
2	11-1/4	7-9/16	14-5/8	6-5/8	7/8	2-3/8	4017
2-1/2	11-1/4	7-9/16	15-5/8	6-5/8	7/8	2-1/8	4050
3	11-1/4	7-9/16	18-7/8	6-5/8	7/8	1-3/4	4200
3-1/2	13-1/4	9-1/8	19-7/8	8-1/8	7/8	2-5/16	4483
4	13-1/4	9-1/8	22-1/4	8-1/8	7/8	2-1/16	4491
5	15-3/4	11-1/2	23-1/4	9-3/8	7/8	2-11/16	5771
6	15-3/4	11-1/2	24-1/4	9-3/8	7/8	2-3/16	7045
8	19-5/16	15	26-1/2	12-7/16	7/8	2-15/16	7495
10	21-3/4	17-3/8	26-1/2	13-11/16	1-1/8	2-15/16	9045
12	23-7/8	19-3/8	26-1/2	14-1/4	1-1/8	2-15/16	9901
14	27	20-5/8	26-1/2	13-3/4	1-1/8	2-15/16	10614
16	29	22-5/8	26-1/2	17-1/16	1-1/8	2-15/16	12298
18	31-1/4	25-1/4	26-1/2	18-5/8	1-1/8	3-1/4	13393
20	33-5/8	27-1/4	26-1/2	19-3/8	1-1/8	3-1/4	14062
24	36-5/8	31-1/4	26-1/2	23-11/16	1-1/8	3-1/4	15409

