

K-406

ANCHOR BASE PLATE

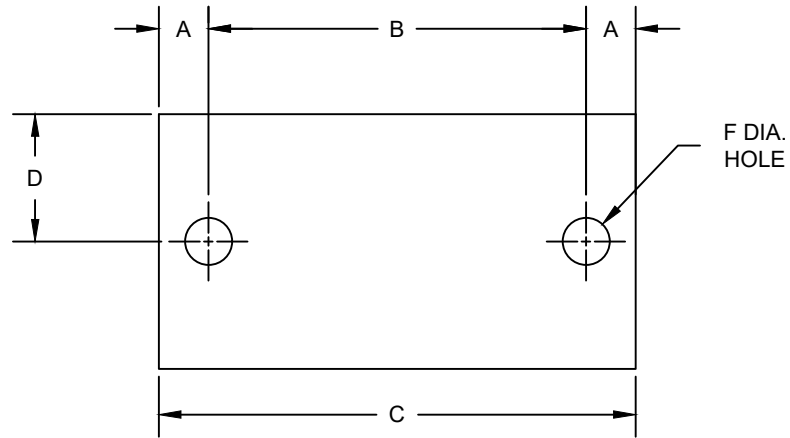
SIZE RANGE - 2" THRU 30" PIPE

MATERIAL - CARBON STEEL, T-304 & T-316 STAINLESS

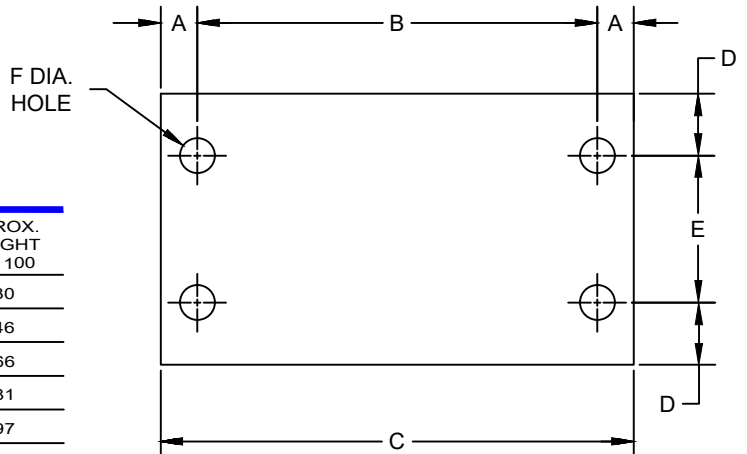
FUNCTION - TO PROVIDE A SMOOTH AND EVEN BEARING SURFACE ON WHICH TO PLACE PIPE. CAN ALSO BE USED TO LOCATE AND SET ANCHOR BOLTS.

FINISH - PLAIN, ELECTRO-GALVANIZED AND HDG

ORDER BY - FIGURE NUMBER, PIPE SIZE AND FINISH



2" THRU 8" PIPE SIZE



10" THRU 30" PIPE SIZE

PIPE SIZE	A	B	C	D	E	F HOLE SIZE	APPROX. WEIGHT PER 100
2	1-1/8	5-3/8	7-5/8	1-1/2	-	7/8	230
2-1/2	1-1/8	5-7/8	8-1/8	1-1/2	-	7/8	246
3	1-1/8	6-1/2	8-3/4	1-1/2	-	7/8	266
3-1/2	1-1/8	7	9-1/4	1-1/2	-	7/8	281
4	1-1/8	7-1/2	9-3/4	1-1/2	-	7/8	297
5	1-1/8	8-9/16	10-13/16	1-1/2	-	7/8	331
6	1-1/2	10-5/8	13-5/8	3	-	1	1131
8	1-1/2	12-5/8	15-5/8	3	-	1	1300
10	1-3/4	15-1/4	18-3/4	1-1/2	5-3/8	5	2059
12	1-3/4	17-1/4	20-3/4	1-1/2	6-3/8	5	2285
14	1-3/4	18-1/2	22	2	7	6	3046
16	1-3/4	20-1/2	24	2	8	6	3328
18	1-3/4	22-1/2	26	2-1/2	9	7	4343
20	1-3/4	24-1/2	28	2-1/2	10	7	4682
24	1-3/4	28-1/2	32	2-1/2	12	7	5358
30	1-3/4	34-1/2	38	2-1/2	15	7	6374