

## K-343

### WELDING LUG

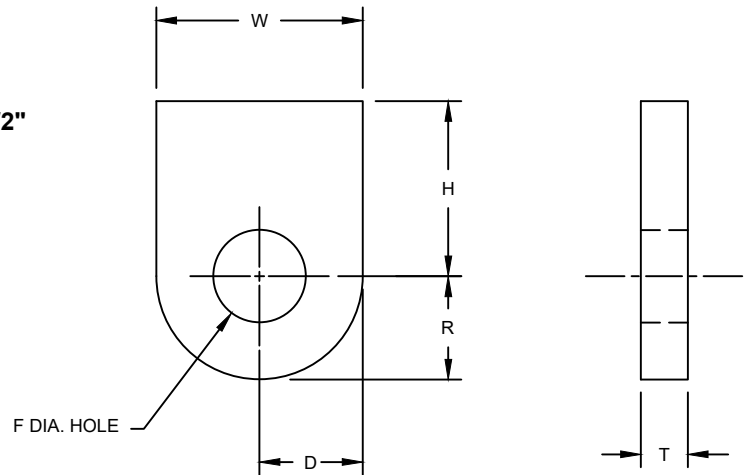
**SIZE RANGE - SHORT LUG IS AVAILABLE FOR USE WITH 1/2" THRU 3-3/4" ROD, LONG LUG MAY BE USED WITH 1/2" THRU 2" ROD.**

**MATERIAL - CARBON STEEL, T-304 & T-316 STAINLESS**

**FUNCTION - USED FOR ATTACHMENT TO STRUCTURAL STEEL. THE LUGS ARE DESIGNED TO BE USED IN CONJUNCTION WITH K-332 BRIDGE CLEVIS.**

**FINISH - PLAIN, ELECTRO-GALVANIZED AND HDG**

**ORDER BY - FIGURE NUMBER, ROD SIZE AND FINISH**



ROD SIZE	PIN	D	F	H		R	T	W	MAX. REC. LOADS	APPROX. WEIGHT PER EA.	
				SHORT	LONG					SHORT	LONG
1/2	5/8	1	11/16	1-1/2	3	1	1/4	2	1130	33	54
5/8	3/4	1	13/16	1-1/2	3	1	1/4	2	1810	32	53
3/4	7/8	1-1/4	15/16	1-1/2	3	1-1/4	3/8	2-1/2	2710	64	104
7/8	1	1-1/4	1-1/8	2	3	1-1/4	3/8	2-1/2	3770	74	101
1	1-1/8	1-1/2	1-1/4	2	3	1-1/2	1/2	3	4960	121	164
1-1/8	1-1/4	1-1/2	1-3/8	3	4	1-1/2	1/2	3	6230	160	203
1-1/4	1-1/2	2	1-5/8	3	4	2	5/8	4	8000	288	359
1-1/2	1-3/4	2-1/2	1-7/8	3	4-1/2	2-1/2	3/4	5	11630	469	629
1-3/4	2	2-1/2	2-1/8	3	4-1/2	2-1/2	3/4	5	15700	453	613
2	2-1/4	3	2-3/8	4	4-1/2	3	3/4	6	20630	718	782
2-1/4	2-1/2	3	2-5/8	4-1/2	-	3	3/4	6	23000	761	-
2-1/2	2-3/4	4	2-7/8	4-1/2	-	4	1	8	30550	1552	-
2-3/4	3	4	3-1/8	4-1/2	-	4	1	8	41600	1518	-
3	3-1/4	4	3-3/8	5	-	4	1	8	50500	1596	-
3-1/4	3-1/2	4-1/2	3-5/8	5	-	4-1/2	1	9	60500	1888	-
3-1/2	3-3/4	4-1/2	3-7/8	6	-	4-1/2	1-1/2	9	71300	3153	-
3-3/4	4	4-1/2	4-1/8	6	-	4-1/2	1-3/4	9	82900	3601	-