



## K-330

### WELDLESS EYE NUT

SIZE RANGE - 3/8" THRU 2-1/2" ROD SIZE

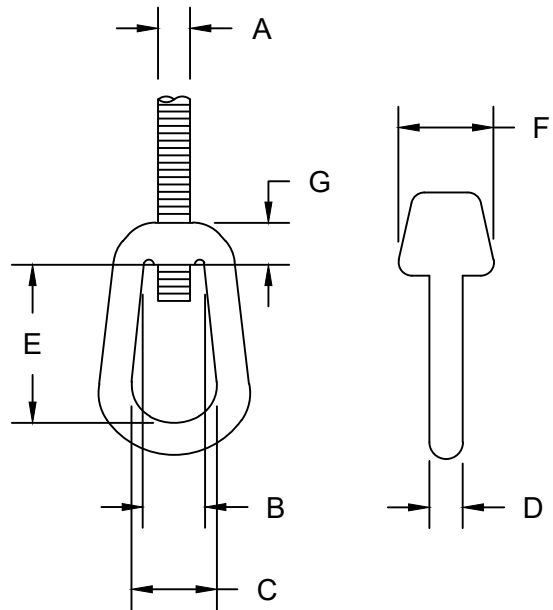
MATERIAL - CARBON STEEL, T-304 & T-316 STAINLESS

FUNCTION - USED ON PIPING INSTALLATIONS WHERE HIGH STRENGTH AND SWIVEL ACTION IS REQUIRED.

THREAD - TAPPED UNC CLASS 2B. RIGHT HAND THREADS ARE STANDARD. LEFT HAND TAP ALSO AVAILABLE.

FINISH - PLAIN, ELECTRO-GALVANIZED AND HDG

ORDER BY - FIGURE NUMBER, ROD SIZE AND FINISH



A ROD SIZE	B	C	D	E	F	G	MAX REC. LOAD LBS.	APPROX. WEIGHT PER 100
3/8	1-1/2	1-3/16	1/2	2	1-3/8	11/16	540	63
1/2	1-1/2	1-3/16	1/2	2	1-3/8	11/16	1010	63
5/8	1-1/2	1-3/16	1/2	2	1-3/8	11/16	1610	64
3/4	1-1/2	1-3/16	1/2	2	1-3/8	11/16	2420	64
7/8	2	1-11/16	3/4	2-5/8	1-15/16	1	3360	172
1	2	1-11/16	3/4	2-5/8	1-15/16	1	4420	174
1-1/8	2-1/2	1-13/16	1	3-3/8	2-3/8	1-1/4	5560	373
1-1/4	2-1/2	1-13/16	1	3-3/8	2-3/8	1-1/4	7140	375
1-1/2	2-1/2	1-13/16	1	3-3/8	2-3/8	1-1/4	10370	376
1-3/4	4	4	1-1/2	6-1/4	4	2-1/4	14000	1657
2	4	4	1-1/2	6-1/4	4	2-1/4	18460	1660
2-1/4	4	4	1-1/2	6-1/4	4	2-1/4	24260	1661
2-1/2	4	4	1-1/2	6-1/4	4	2-1/4	29880	1661