

K-327 PIPE ROLLER STAND

SIZE RANGE - 2" THRU 30" PIPE SIZE

MATERIAL - CARBON STEEL, T-304 & T-316 STAINLESS

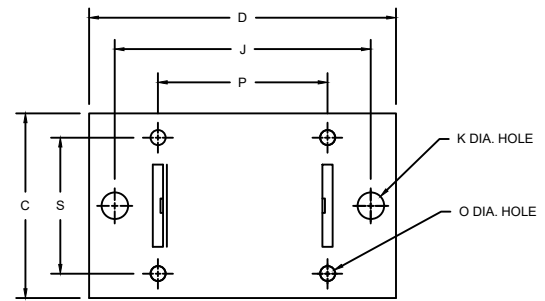
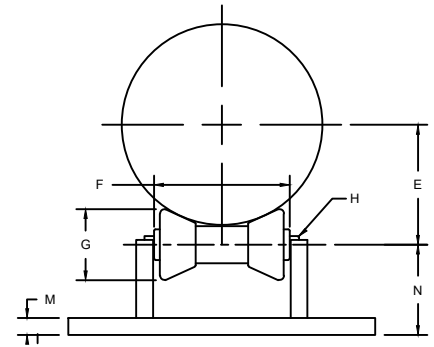
FUNCTION - DESIGNED FOR USE ON LINES SUBJECT TO LONGITUDINAL MOVEMENT.

FINISH - PLAIN, ELECTRO-GALVANIZED AND HDG

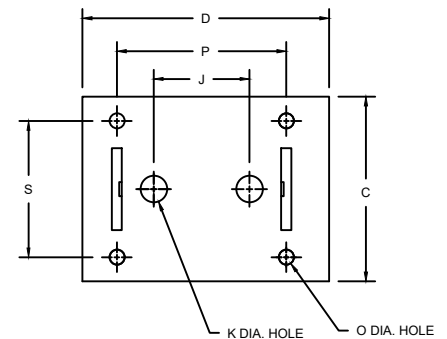
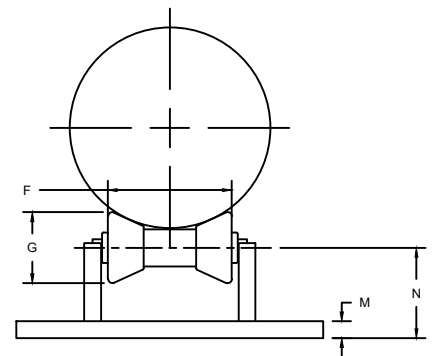
ORDER BY - FIGURE NUMBER, PIPE SIZE AND FINISH

PIPE SIZE	C	D	E	F	G	H	MAX REC. LOAD LBS.	APPROX. WEIGHT PER 100
2	5-3/4	8-1/2	1-1/2	2-3/4	1-7/8	1/2	390	570
2 1/2	5-3/4	8-1/2	1-3/4	2-3/4	1-7/8	1/2	390	570
3	5-3/4	8-1/2	2-1/8	2-3/4	1-7/8	1/2	390	570
4	5-3/4	10-1/8	2-3/4	3-3/4	2-1/8	1/2	950	760
5	5-3/4	10-1/8	3-3/8	3-3/4	2-1/8	1/2	950	760
6	5-3/4	10-1/8	3-7/8	3-3/4	2-1/8	1/2	950	760
8	6-7/8	10-7/8	5-1/8	6-1/8	3-1/4	3/4	2100	1330
10	6-7/8	10-7/8	6-1/4	6-1/8	3-1/4	3/4	2100	1330
12	7-7/8	11	7-3/8	8	4	7/8	3075	2375
14	7-7/8	11	8	8	4	7/8	3075	2375
16	8-3/4	12-1/2	8-7/8	9-1/8	4-1/2	1-1/8	4980	3420
18	8-3/4	12-1/2	10	9-1/8	4-1/2	1-1/8	4980	3420
20	8-3/4	12-1/2	11	9-1/8	4-1/2	1-1/8	4980	3420
24	8-7/8	13-3/4	13	10	4-1/2	1-1/4	6100	4275
30	10-3/4	17-1/4	16-1/4	12-1/2	5-1/2	1-3/4	7500	8550

PIPE SIZE	J	K	M	N	O	P	S
2-3	6-1/2	1	1/4	2	7/16	3-1/2	4-1/8
4-6	8	1	1/4	2-3/8	9/16	4-3/4	4-1/4
8-10	4	1	3/8	3-3/4	5/8	7	5
12-14	5-3/4	1	3/8	3-3/4	9/16	9-1/4	6
16-20	6-3/4	1	1/2	4-5/8	3/4	10-1/4	6-1/2
22-24	7-1/2	1	5/8	4-3/4	13/16	11-1/2	6-3/4
26-30	10	1	5/8	5-5/8	1	14-3/8	8



2" THRU 6" PIPE SIZE



8" THRU 30" PIPE SIZE