

K-325

PIPE ROLLER CHAIR

SIZE RANGE - 2" THRU 24" PIPE SIZE

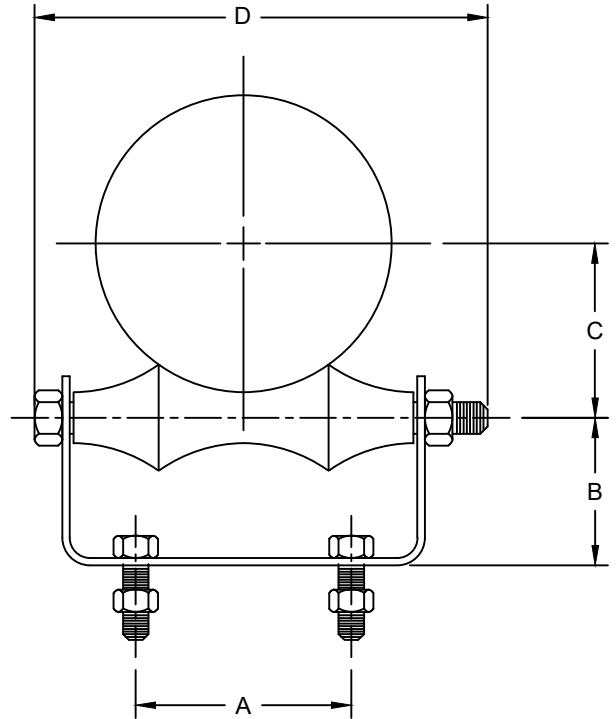
MATERIAL - CARBON STEEL, T-304 & T-316 STAINLESS

FUNCTION - SUPPORT FOR PIPING WHERE EXPANSION MAY OCCUR DUE TO THERMAL MOVEMENT. USED WHEN CEILING SUPPORT IS IMPRACTICAL.

FINISH - PLAIN, ELECTRO-GALVANIZED AND HDG

ORDER BY - FIGURE NUMBER, PIPE SIZE AND FINISH

NOTE: WHEN PIPE LINE IS INSULATED, TOTAL OUTSIDE DIAMETER OF PIPE AND COVERING SHOULD BE USED TO DETERMINE SIZE OF HANGER: ALSO SEE K-260-1 TO K-265-4



PIPE SIZE	A	B	C	D	AXLE SIZE	BOLT SIZE	MAX REC. LOAD LBS.	APPROX. WEIGHT PER 100
2	1-1/4	1-1/2	1-9/16	4	3/8	3/8 x 1-1/4	600	104
2 1/2	1-1/4	1-7/8	1-7/8	4-1/2	1/2	3/8 x 1-1/4	660	163
3	2	2	2-3/16	5-1/2	1/2	3/8 x 1-1/4	700	175
3 1/2	2	2-5/16	2-1/2	6	1/2	3/8 x 1-1/4	750	245
4	2	2-5/16	2-5/16	6-1/2	1/2	1/2 x 1-1/2	750	347
5	3	2-9/16	3-7/16	7-1/2	5/8	1/2 x 1-1/2	750	488
6	3-1/8	2-3/4	4-1/16	9	3/4	1/2 x 1-1/2	1070	613
8	3-3/8	3-1/8	5-1/8	12-5/8	7/8	5/8 x 1-1/2	1350	1039
10	5-1/4	3-13/16	6-3/8	14-3/4	7/8	5/8 x 1-3/4	1730	1654
12	5-1/2	4-1/8	7-9/16	16-7/8	1	5/8 x 1-3/4	2400	2190
14	6-1/2	4-11/16	8-7/16	18-3/4	1-1/8	3/4 x 2	3130	2770
16	8-1/4	5-3/8	9-7/16	21	1-1/4	3/4 x 2-1/2	3970	3460
18	9-1/4	6	10-9/16	23-1/8	1-1/4	3/4 x 2-1/2	4200	4120
20	10-1/4	6-1/2	11-3/4	24-5/8	1-3/8	3/4 x 2-1/2	4550	5510
24	12-1/4	7-7/8	13-7/8	29-3/8	1-1/2	7/8 x 3-1/2	6160	9000