

K-324

PIPE ROLLER HANGER

SIZE RANGE - 2 1/2" THRU 24" PIPE SIZE

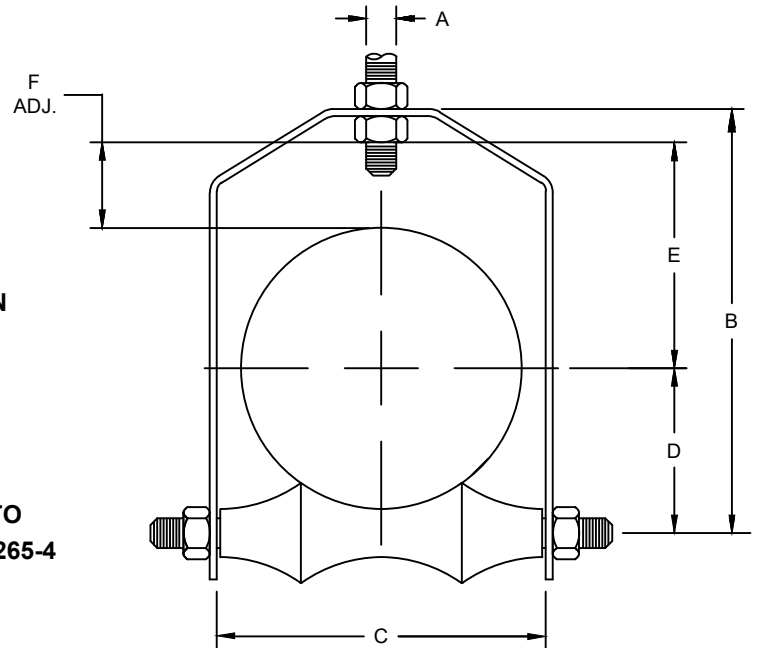
MATERIAL - CARBON STEEL, T-304 & T-316 STAINLESS

FUNCTION - FOR SUPPORTING PIPE WHERE EXPANSION MAY OCCUR DUE TO THERMAL MOVEMENT.

FINISH - PLAIN, ELECTRO-GALVANIZED AND HDG

ORDER BY - FIGURE NUMBER, PIPE SIZE AND FINISH

NOTE: WHEN PIPE LINE IS INSULATED, TOTAL OUTSIDE DIAMETER OF PIPE AND COVERING SHOULD BE USED TO DETERMINE SIZE OF HANGER: ALSO SEE K-260-1 TO K-265-4



PIPE SIZE	A ROD SIZE	B	C	D	E	F	MAX REC. LOAD LBS.	APPROX. WEIGHT PER 100
2 1/2	1/2	5-5/16	3-5/16	1-7/8	3-7/16	2	225	171
3	1/2	6-5/8	3-15/16	2-3/16	3-3/4	2	310	224
3 1/2	1/2	7-1/4	4-3/8	2-9/16	4	2	390	250
4	5/8	7-7/8	5-1/16	2-7/8	4-3/16	2	475	372
5	5/8	9-1/8	6-1/8	3-7/16	4-3/4	2	685	649
6	3/4	10-3/16	7-1/16	4-1/16	5-1/8	2	780	869
8	7/8	12-1/2	9-3/16	5-1/16	6-5/16	2	780	1368
10	7/8	15-5/16	11-3/8	6-5/16	7-7/8	2-1/2	965	1909
12	7/8	17-9/16	13-1/2	7-7/16	8-7/8	2-1/2	1200	3001
14	1	20-1/4	14-5/8	8-7/16	10-7/16	3-7/16	1200	3578
16	1	22-3/8	16-5/8	9-5/16	11-11/16	3-11/16	1200	4150
18	1	24-1/2	18-5/8	10-3/8	12-5/8	3-5/8	1400	5382
20	1-1/4	26-3/4	20-5/8	11-11/16	13-1/4	3-1/4	1600	7317
24	1-1/2	31-9/16	24-5/8	13-13/16	15-1/2	3-1/2	1600	12500