

K-322

PIPE ROLL WITH SOCKETS

SIZE RANGE - 2" THRU 36" PIPE SIZE

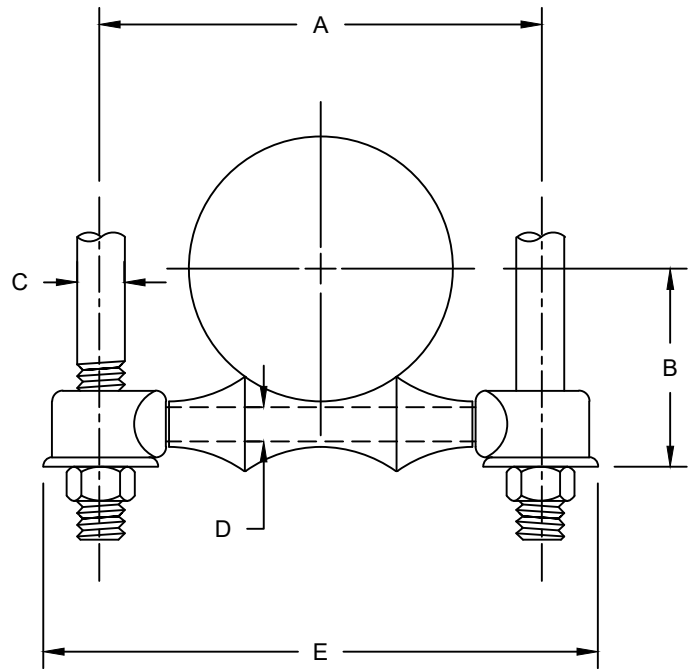
MATERIAL - CARBON STEEL, T-304 & T-316 STAINLESS

FUNCTION - FOR SUPPORTING PIPE WHERE EXPANSION MAY OCCUR DUE TO THERMAL MOVEMENT. DOUBLE ROD DESIGN PROVIDES SUPPORT FOR GREATER LOADS.

FINISH - PLAIN, ELECTRO-GALVANIZED AND HDG

ORDER BY - FIGURE NUMBER, PIPE SIZE AND FINISH

NOTE: WHEN PIPE LINE IS INSULATED, TOTAL OUTSIDE DIAMETER OF PIPE AND COVERING SHOULD BE USED TO DETERMINE SIZE OF HANGER: ALSO SEE K-260-1 THRU K-265-4



PIPE SIZE	A	B	C ROD SIZE	D AXLE SIZE	E	MAX REC. LOAD LBS.	APPROX. WEIGHT PER 100
2	4-1/16	2-3/16	3/8	3/8	5-7/16	600	58
2 1/2	4-7/8	2-5/8	1/2	1/2	6-1/4	660	123
3	5-1/2	2-15/16	1/2	1/2	6-7/8	700	133
3 1/2	6	3-5-16	1/2	1/2	7-3/8	750	146
4	6-7/8	3-3/4	5/8	1/2	8-7/16	750	230
5	8	4-5/16	5/8	5/8	9-9/16	750	285
6	9-5/8	4-15/16	3/4	3/4	11-9/16	1070	460
8	11-13/16	6-5/16	7/8	7/8	14	1350	720
10	14	7-9/16	7/8	7/8	16-3/16	1730	1100
12	16	8-11/16	7/8	1	18-3/16	2400	1630
14	18	9-13/16	1	1-1/8	20-11/16	3130	2150
16	20-1/4	11-1/16	1	1-1/4	23	3970	2850
18	22-1/2	12-1/8	1	1-1/4	25-1/4	4200	3650
20	25	13-1/2	1-1/4	1-3/8	28-1/4	4550	4650
24	28-5/8	15-11/16	1-1/2	1-1/2	31-7/8	6160	6200
30	33-1/2	19-3/8	1-1/2	1-7/8	39-5/8	7290	12500
36	42-1/2	22-3/4	2	2-1/4	47-1/16	11000	28100