

K-261

PIPE COVERING PROTECTION SADDLE - 1 1/2" INSULATION

SIZE RANGE - 3/4" THRU 36" PIPE

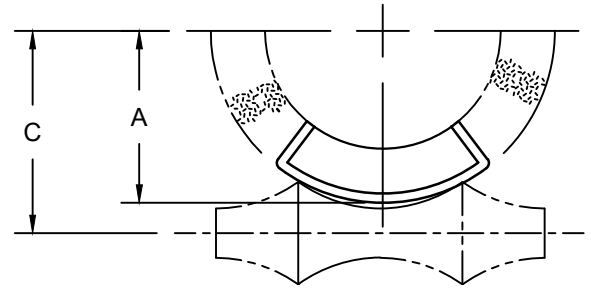
MATERIAL - CARBON STEEL, T-304 & T-316 STAINLESS

FUNCTION - DESIGNED TO PROVIDE BEARING SURFACE, FOR SUPPORT, OUTSIDE OF THE INSULATION, THUS PREVENTING DAMAGE. NOTCHES ARE PROVIDED TO MINIMIZE SADDLE CONTACT WITH PIPE AND PREVENT HEAT LOSS.

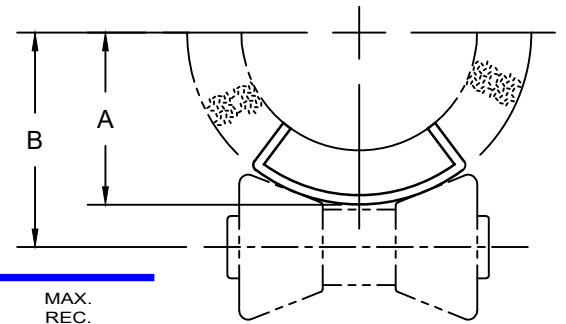
NOTE - ALL SADDLES ARE 12" LONG AND COVER 60 DEGREES OF CIRCUMFERENCE OF THE PIPE.

FINISH - PLAIN, ELECTRO-GALVANIZED AND HDG

ORDER BY - FIGURE NUMBER, PIPE SIZE AND FINISH



LONG PATTERN ROLLER



SHORT PATTERN ROLLER

PIPE SIZE	A	B	C	ACTUAL INSULATION THICKNESS	USE WITH K-324	WITH K-321	ROLLER K-320	MAX. REC. LOAD LBS.
3/4	2-5/16	2-7/8	3	1-9/16	3-1/2	3	2 - 3/1/2	1200
1	2-7/16	3	3-1/8	1-9/16	4	3	2 - 3/1/2	1200
1-1/4	2-11/16	3-1/4	3-3/8	1-5/8	5	3-1/2	2 - 3/1/2	1200
1-1/2	2-3/4	3-5/16	3-7/16	1-5/8	5	3-1/2	2 - 3/1/2	1200
2	3	3-11/16	3-3/4	1-5/8	5	4	2 - 3/1/2	1200
2-1/2	3-7/16	4-1/4	4-3/16	1-7/8	6	5	4-6	1200
3	3-3/4	4-1/2	4-9/16	1-9/16	6	5	4-6	1800
3-1/2	3-15/16	4-15/16	4-3/4	1-13/16	8	6	4-6	1800
4	4-3/16	5	5	1-9/16	8	6	4-6	1800
5	4-3/4	5-9/16	5-9/16	1-9/16	8	8	4-6	1800
6	5-1/16	5-7/8	5-15/16	1-1/2	10	8	8-10	1800
8	6-3/16	7-1/4	7-1/8	1-9/16	12	10	8-10	1800
10	7-1/4	8-1/2	8-5/16	1-5/8	14	12	8-10	1800
12	8-3/16	9-11/16	9-5/16	1-5/8	16	14	12-14	5000
14	8-13/16	10-5/16	10-1/16	1-1/2	18	16	12-14	5000
16	9-3/4	11-3/8	11-1/16	1-1/2	20	18	16-20	5000
18	10-3/4	12-9/16	12-1/16	1-1/2	24	20	16-20	5000
20	11-3/4	13-5/8	12-1/8	1-1/2	24	24	24	7200
24	13-3/4	16	15-5/16	1-1/2	-	30	30	7200
30	16-3/4	19-1/4	18-1/2	1-1/2	-	-	36-42	7200
36	20-3/16	19-11/16	21-1/16	1-1/2	-	-	36-42	7200