

# K-65

## REVERSIBLE C-TYPE BEAM CLAMPS

3/4" THROAT OPENING

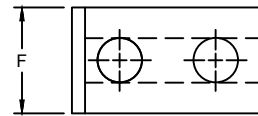
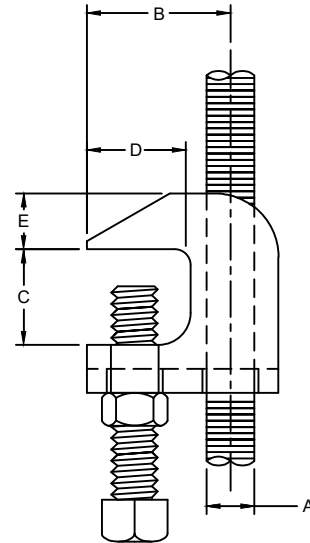
SIZE RANGE - 3/8" THRU 5/8" ROD SIZE (1/2" THRU 10" PIPE)

MATERIAL - CARBON STEEL WITH HARDENED CUP POINT  
SET SCREW AND JAM NUT

FUNCTION - RECOMMENDED FOR HANGING FROM STEEL BEAM  
WHERE FLANGE THICKNESS DOES NOT EXCEED 3/4"

FINISH - PLAIN, ELECTRO-GALVANIZED AND HDG

ORDER BY - FIGURE NUMBER, ROD SIZE AND FINISH



| ROD SIZE | PIPE SIZE | B      | C   | D | E    | F     | MAX REC. LOAD LBS. | APPROX. WEIGHT PER 100 |
|----------|-----------|--------|-----|---|------|-------|--------------------|------------------------|
| 3/8      | 1/2 - 4   | 1-3/16 | 3/4 | 1 | 7/16 | 1     | 610                | 28                     |
| 1/2      | 5 - 8     | 1-1/2  | 3/4 | 1 | 9/16 | 1-1/4 | 1130               | 55                     |
| 5/8      | 10        | 1-1/2  | 3/4 | 1 | 9/16 | 1-1/4 | 1130               | 55                     |