

K-5

STANDARD DOUBLE BOLT PIPE CLAMP

SIZE RANGE - 1/2" THRU 36" PIPE SIZE

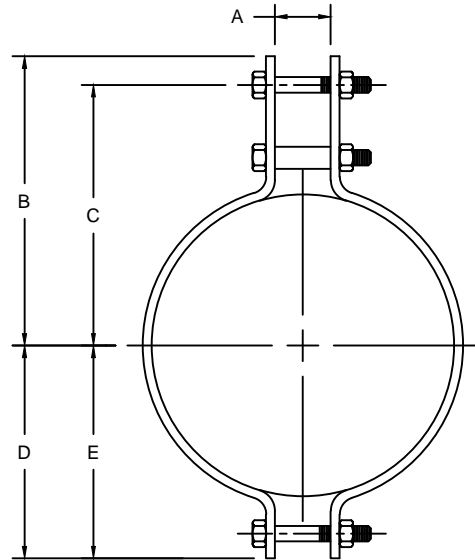
MATERIAL - CARBON STEEL AND STAINLESS STEEL

FUNCTION - DOUBLE BOLT ALLOWS EXTENSION OF ATTACHMENT BEYOND PIPE COVERING SEE MAXIMUM INSULATION COLUMN.

MAXIMUM TEMPERATURE - 750°

FINISH - PLAIN, ELECTRO-GALVANIZED AND HDG

ORDER BY - FIGURE NUMBER, PIPE SIZE AND FINISH



PIPE SIZE	A	B	C	D	E	MAX INSUL.	BOLT SIZE	MAX REC. LOADS LBS FOR SERVICE TEMP.		APPROX. WEIGHT PER 100
								650° F	750° F	
1/2	5/8	2-13/16	2-3/16	1-1/2	7/8	1-1/2	3/8	950	850	73
3/4	5/8	3	2-3/8	1-11/16	1-1/16	1-1/2	3/8	950	850	73
1	5/8	3-1/4	2-5/8	1-15/16	1-5/16	1-1/2	3/8	950	850	77
1-1/4	5/8	3-1/2	2-7/8	2-3/16	1-9/16	1-1/2	3/8	950	850	79
1-1/2	1	5-3/8	4-1/2	2-5/8	1-3/4	3	5/8	1545	1380	236
2	1	5-13/16	4-15/16	2-15/16	2-1/16	3	5/8	1545	1380	251
2-1/2	1	6-1/8	5-1/4	3-1/4	2-3/8	3-1/2	5/8	1545	1380	274
3	1	6-3/4	5-7/8	3-5/8	2-11/16	3-1/2	5/8	1545	1380	289
3-1/2	1	7-3/16	6-5/16	3-7/8	3	4	5/8	1545	1380	315
4	1	7-3/4	6-5/8	4-11/16	3-9/16	4	3/4	2500	2230	745
5	1	8-9/16	7-7/16	5-5/16	4-3/16	4	3/4	2500	2230	828
6	1-1/2	9-7/8	8-1/2	6-1/8	4-3/4	4-1/2	7/8	2865	2555	1261
8	1-1/2	11	9-5/8	7-5/16	5-15/16	4-1/2	7/8	2865	2555	1535
10	1-1/2	12	10-1/2	8-7/8	7-15/16	4-1/2	1	3240	2890	2173
12	1-1/2	13-1/8	11-5/8	9-15/16	8-7/16	4-1/2	1	3240	2890	2404
14	2	14-5/16	12-9/16	11-5/16	9-9/16	4-1/2	1-1/4	4300	3835	4002
16	2	15-9/16	13-13/16	12-5/16	10-9/16	5	1-1/4	4300	3835	4362
18	2	16-7/8	15-1/8	13-3/8	11-5/8	5-1/2	1-1/4	4300	3835	4935
20	2	18-1/4	16-3/8	15-1/8	13-1/4	5-1/2	1-3/8	5490	4900	6570
24	2	20-7/16	18-7/16	17-5/16	15-5/16	5-1/2	1-3/8	5490	4900	7524
30	2-1/2	26	23	22	19	7	1-3/8	7500		19502
36	2-1/2	32-3/8	28-7/8	25-5/8	22-1/8	10	1-3/4	10500		23488