

## K-4B

### PIPE CLAMP FOR SWAY BRACING

SIZE RANGE - 3/4" THRU 18" PIPE SIZE

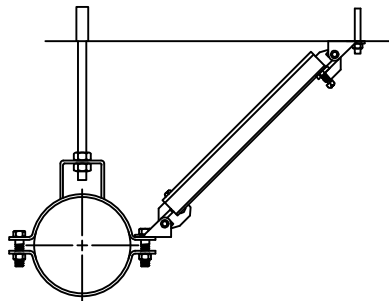
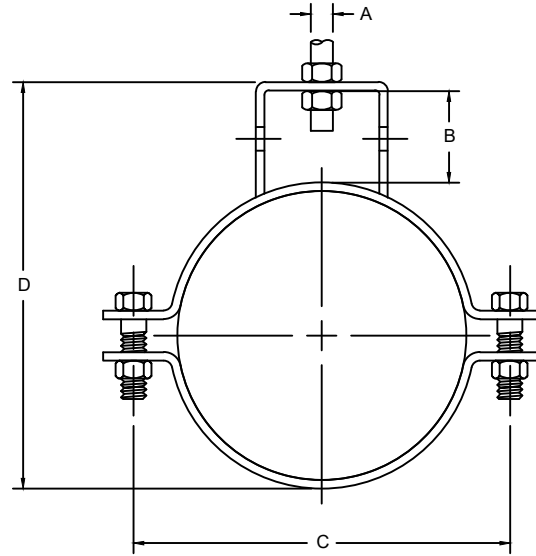
MATERIAL - CARBON STEEL AND STAINLESS STEEL

FUNCTION - FOR BRACING PIPE AGAINST SWAY AND SEISMIC DISTURBANCE.

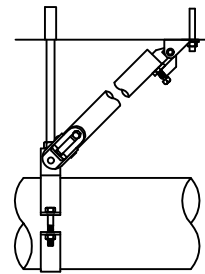
FEATURES - THIS PRODUCT'S DESIGN INCORPORATES CONCENTRIC LOADING OF THE "BRACE PIPE" CONNECTION COMPONENTS AND FASTENERS WHICH IS CRITICAL TO THE PERFORMANCE OF SEISMIC BRACING ASSEMBLIES.

FINISH - PLAIN, ELECTRO-GALVANIZED AND HDG

ORDER BY - FIGURE NUMBER, PIPE SIZE AND FINISH



TRANSVERSE BRACE



LONGITUDINAL BRACE

PIPE SIZE	A	B	C	D	BOLT SIZE	MAX. DESIGN LOAD LBS.	APPROX. WEIGHT PER 100
3/4	3/8	1	2-7/8	2-5/8	5/16	330	56
1	3/8	1	3-1/4	2-15/16	5/16	330	60
1-1/4	3/8	1	3-9/16	3-1/4	5/16	330	74
1-1/2	3/8	1	3-13/16	3-7/16	5/16	330	79
2	3/8	1-1/2	5-1/8	4-5/8	5/16	440	156
2-1/2	1/2	1-3/4	5-5/8	5-3/8	3/8	440	176
3	1/2	1-7/8	6-3/4	6-1/8	3/8	660	198
3-1/2	1/2	2	7-1/4	6-3/4	3/8	660	219
4	5/8	2	8-5/8	7-1/4	1/2	800	288
5	5/8	2	9-7/8	8-5/16	5/8	980	390
6	3/4	2-1/8	10-15/16	9-1/2	5/8	980	448
8	7/8	2-1/8	13-7/16	11-1/2	3/4	1200	691
10	7/8	2-1/8	18-1/2	14-3/8	7/8	-	-
12	7/8	2-1/8	20-1/2	16-3/8	7/8	-	-