

K-35

CONCRETE ROD ATTACHMENT PLATE

SIZE RANGE - 3/8" THRU 2" ROD SIZE

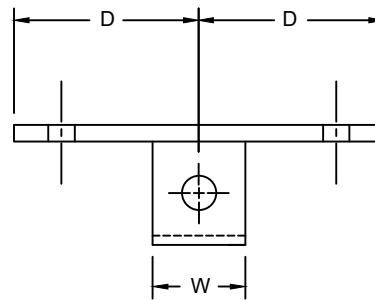
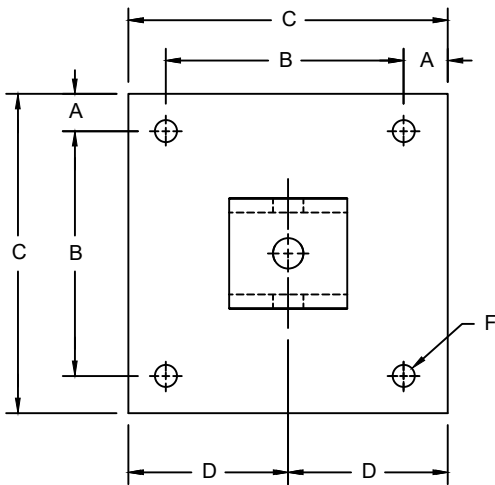
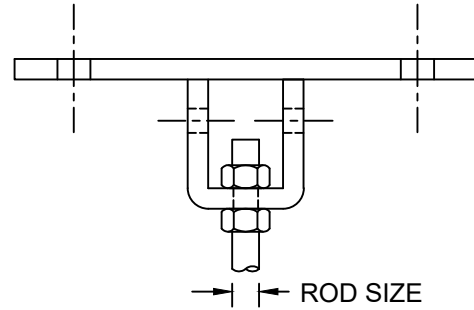
MATERIAL - CARBON STEEL AND STAINLESS STEEL

FUNCTION - STRUCTURAL ATTACHMENT TO CONCRETE PIPE LINES RUNNING AT A DEFINITE DISTANCE FROM THE CEILING WHERE VERTICAL ADJUSTMENT TO DESIRED.

NORMALLY USED WITH THREADED ROD AND NUT.

FINISH - PLAIN, ELECTRO-GALVANIZED AND HDG

ORDER BY - FIGURE NUMBER, ROD SIZE AND FINISH



ROD SIZE	A	B	C	D	F	W	MAX REC. LOAD LBS.	APPROX. WEIGHT PER 100
3/8	1	8	10	5	9/16	2	610	1155
1/2	1	8	10	5	9/16	2	1130	1160
5/8	1	8	10	5	9/16	2	1810	1505
3/4	1	8	10	5	11/16	2-1/2	2710	1605
7/8	1	8	10	5	11/16	2-1/2	3770	1665
1	2	8	12	6	13/16	3	4960	3485
1-1/4	2	8	12	6	15/16	4	8000	3865
1-1/2	2	8	12	6	1-1/16	5	11630	5635
1-3/4	2	10	14	7	1-3/8	5	15700	8805
2	2	10	14	7	1-3/8	6	20700	9215