

# K-34

## CONCRETE CLEVIS PLATE WITH PIN

SIZE RANGE - 3/8" THRU 2" ROD SIZE

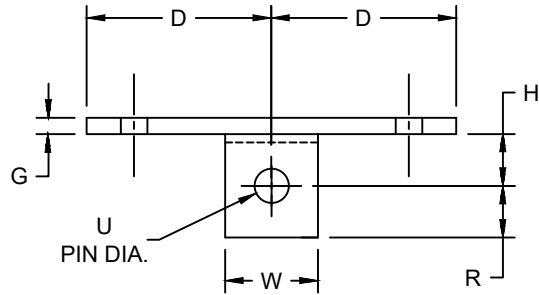
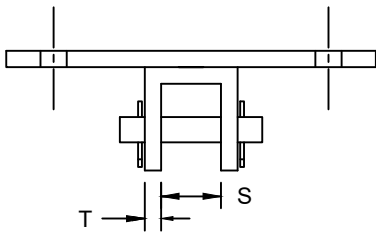
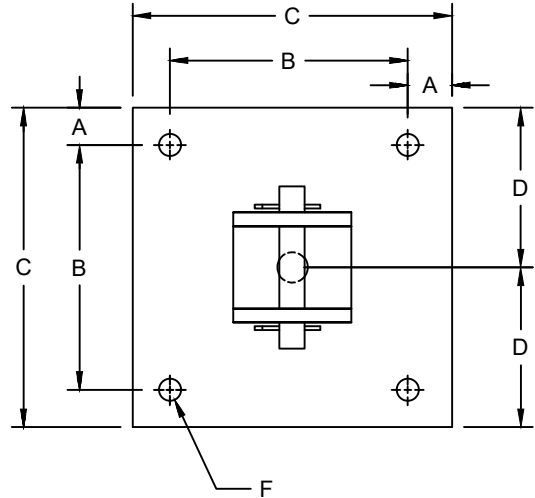
MATERIAL - CARBON STEEL AND STAINLESS STEEL

FUNCTION - STRUCTURAL ATTACHMENT TO CONCRETE CEILING WHERE FLEXIBILITY IS DESIRED. CONCRETE CLEVIS

PLATE IS NORMALLY USED IN CONJUNCTION WITH FIG. 330 WELDLESS EYE NUT OR FIG. 101 WELDED EYE ROD.

FINISH - PLAIN, ELECTRO-GALVANIZED AND HDG

ORDER BY - FIGURE NUMBER, ROD SIZE AND FINISH



ROD SIZE	A	B	C	D	F	G	H	R	S	T	U	W	MAX REC. LOAD LBS.	APPROX. WEIGHT PER 100
3/8	1	8	10	5	9/16	3/8	2	7/8	1-1/4	1/4	1/2	2	610	1175
1/2	1	8	10	5	9/16	3/8	2	7/8	1-1/4	1/4	5/8	2	1130	1185
5/8	1	8	10	5	9/16	1/2	2	1	1-1/4	1/4	3/4	2	1810	1565
3/4	1	8	10	5	11/16	1/2	2	1-1/8	1-1/2	3/8	7/8	2-1/2	2710	1685
7/8	1	8	10	5	11/16	1/2	3	1-1/4	2	3/8	1	2-1/2	3770	1805
1	2	8	12	6	13/16	3/4	3	1-1/2	2	1/2	1-1/8	3	4960	3685
1-1/4	2	8	12	6	15/16	3/4	3	2	2-1/2	5/8	1-3/8	4	8000	4085
1-1/2	2	8	12	6	1-1/8	1	4	2-1/2	3	3/4	1-5/8	5	11630	5975
1-3/4	2	10	14	7	1-3/8	1-1/4	5	2-3/4	3-3/4	3/4	1-7/8	5	15700	9355
2	2	10	14	7	1-3/8	1-1/4	5	3-1/4	3-3/4	3/4	2-1/4	6	20700	10000