

K-32

ANCHOR CHAIR

SIZE RANGE - 4" THRU 24" PIPE SIZE

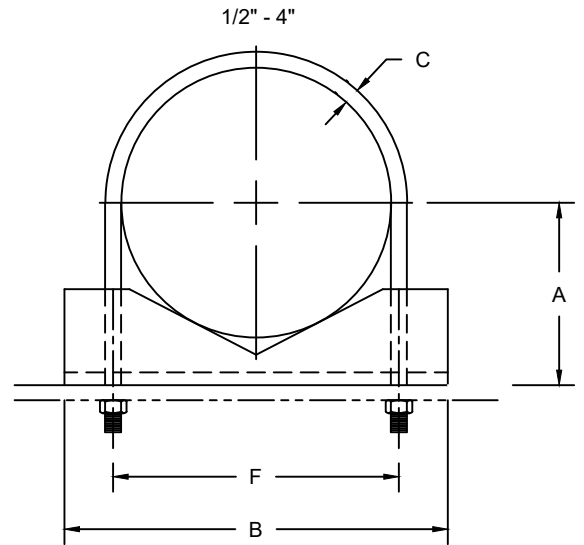
MATERIAL - CARBON STEEL AND STAINLESS STEEL

FUNCTION - PIPE ANCHOR USED WITH BRACKET OR STRUCTURAL MEMBERS

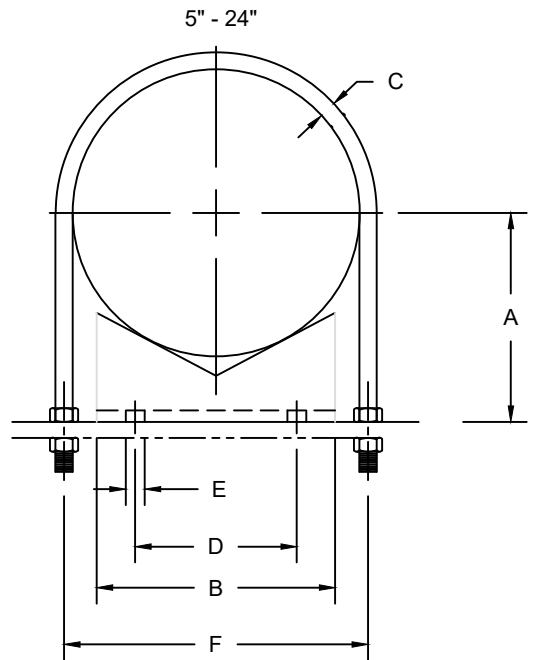
FINISH - PLAIN, ELECTRO-GALVANIZED AND HDG

ORDER BY - FIGURE NUMBER, PIPE SIZE AND FINISH

NOTE - 1/2" THRU 4", USE U-BOLT TO FASTEN CHAIR TO SUPPORT; 5" THRU 24" HOLES ARE PROVIDED IN CHAIR FOR FASTENING TO SUPPORT, IF REQUIRED.



PIPE SIZE	A	B	C	F	APPROX. WEIGHT PER 100
1/2	15/16	2-3/16	3/8	1-15/16	80
3/4	1-1/16	2-3/8	3/8	1-1/2	88
1	1-3/16	2-5/8	3/8	1-3/4	96
1-1/4	1-3/8	2-7/8	3/8	2-1/16	107
1-1/2	1-9/16	3-1/4	3/8	2-3/8	118
2	1-3/4	3-5/8	3/8	2-13/16	132
2-1/2	2	4-15/16	1/2	3-7/16	175
3	2-3/8	5-9/16	1/2	4-1/16	215
3-1/2	2-5/8	6-1/16	1/2	4-9/16	240
4	2-7/8	6-9/16	1/2	5-1/16	265



PIPE SIZE	A	B	C	D	E	F	APPROX. WEIGHT PER 100
5	3-7/16	4	1/2	2-1/4	13/16 X 1-1/16	6-1/16	290
6	4	5	5/8	3	13/16 X 1-1/16	7-1/4	315
8	5-1/4	7	5/8	4-1/2	13/16 X 1-1/16	9-3/8	885
10	6-7/16	8	3/4	5-1/2	13/16 X 1-1/16	11-5/8	1050
12	7-1/2	9	7/8	6	13/16 X 1-1/16	13-3/4	1210
14	8-3/16	10	7/8	7	13/16 X 1-1/16	15	1480
16	9-1/4	10	7/8	7	13/16 X 1-1/16	17	1735
18	10-3/8	11	1	7	13/16 X 1-1/16	19-1/8	2011
20	11-3/8	11	1	7	13/16 X 1-1/16	21-1/8	2332
24	13-5/8	12	1	8	13/16 X 1-1/16	25-1/8	2550