

K-316T

THREADED PIPE STAND

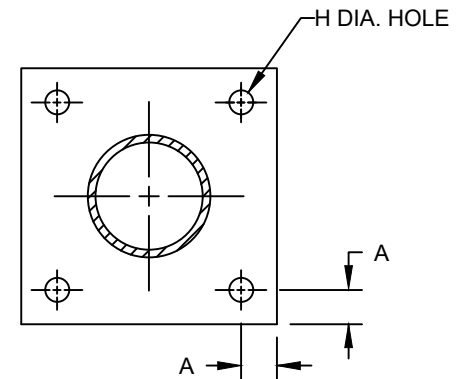
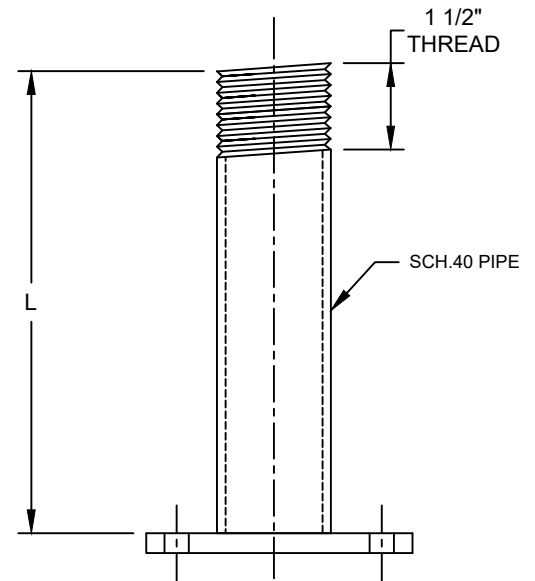
SIZE RANGE - 2" THRU 6" PIPE SIZE

MATERIAL - CARBON STEEL AND STAINLESS STEEL

FUNCTION - K-316T PROVIDES A THREADED SUPPORT BASE FOR VARIOUS ADJUSTABLE APPLICATIONS.

FINISH - PLAIN, ELECTRO-GALVANIZED AND HDG

ORDER BY - FIGURE NUMBER, PIPE SIZE AND FINISH



STAND PIPE SIZE	A	H	PLATE SIZE	APPROX. WEIGHT PER 100
1	1	7/16	1/4 X 5 SQUARE	416
1-1/4	1	7/16	1/4 X 6 SQUARE	474
1-1/2	1	7/16	1/4 X 6 SQUARE	519
2	1	7/16	3/8 X 6 SQUARE	562
2-1/2	1-1/8	9/16	1/2 X 8 SQUARE	880
3	1-1/8	9/16	1/2 X 9 SQUARE	905
4	1-1/4	11/16	5/8 X 11 SQUARE	1627
6	1-1/2	13/16	3/4 X 13 1/2 SQUARE	2976

* WEIGHT IS BASED ON "L" DIMENSION OF 1'-0"