

K-20L

LONG PIPE STRAP

SIZE RANGE - 1" THRU 8" PIPE SIZE

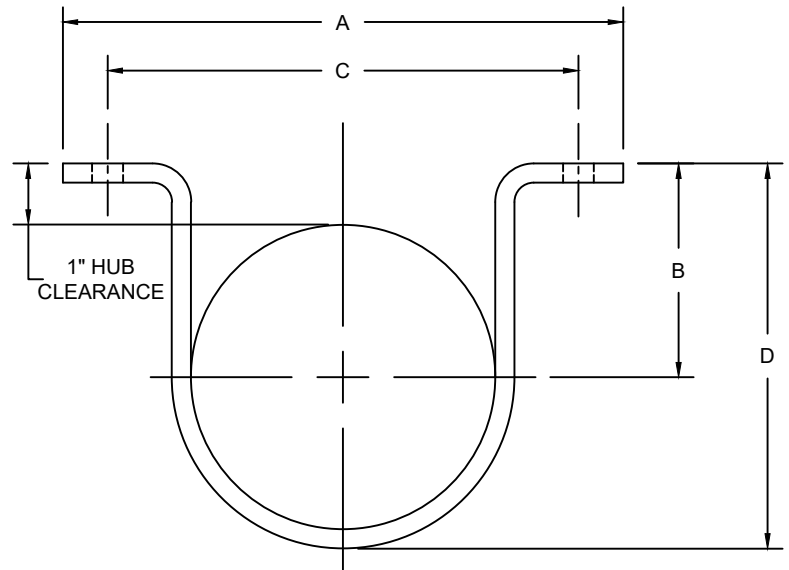
MATERIAL - CARBON STEEL AND STAINLESS STEEL

FUNCTION - DESIGNED TO HAND OR HOLD DOWN PIPING WITH STANDARD OUTSIDE DIAMETER, WHERE HOLDING PIPE AWAY FROM MOUNTING SURFACE IS REQUIRED

MAXIMUM TEMPERATURE - 650°

FINISH - PLAIN, ELECTRO-GALVANIZED AND HDG

ORDER BY - FIGURE NUMBER, PIPE SIZE AND FINISH



PIPE SIZE	A	B	C	D	HOLE SIZE	MAX REC. LOAD LBS.	APPROX. WEIGHT PER 100
1	4-9/16	1-5/8	3-3/8	2-7/16	7/16	410	33
1-1/4	4-15/16	1-13/16	3-3/4	2-3/4	7/16	410	42
1-1/2	5-3/16	1-15/16	4-1/4	3	7/16	410	46
2	5-3/4	2-1/16	4-3/4	3-3/8	7/16	410	50
2-1/2	6-1/4	2-1/2	5-1/4	4-3/16	7/16	610	115
3	6-7/8	2-3/4	5-7/8	4-3/4	7/16	610	126
3-1/2	7-3/8	3	6-3/8	5-1/4	7/16	610	145
4	8-3/8	3-1/4	7	5-3/4	9/16	725	173
5	9-7/16	3-3/4	7-7/8	6-3/4	9/16	725	197
6	10-1/2	4-1/4	8-7/8	7-13/16	9/16	725	239
8	14	5-5/16	11-1/2	10	11/16	900	463