

## K-1DI

### DUCTILE IRON PIPE CLEVIS HANGER

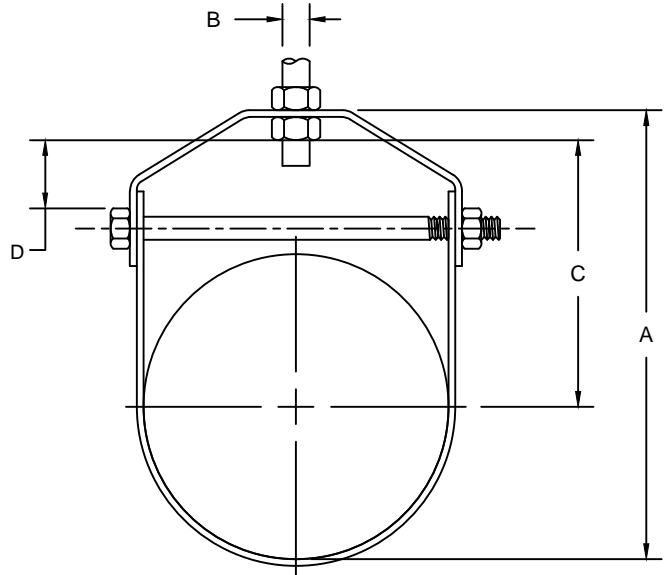
SIZE RANGE - 4" THRU 24" PIPE SIZE

MATERIAL - CARBON STEEL AND STAINLESS STEEL

FUNCTION - FOR THE SUSPENSION OF FLANGED OR BELL AND SPIGOT A.W.W.A. CAST IRON PIPE. THE O.D. OF THE CAST IRON PIPE IS SHOWN IN THE DATA TABLE.

FINISH - PLAIN, ELECTRO-GALVANIZED AND HDG

ORDER BY - FIGURE NUMBER, PIPE SIZE AND FINISH



PIPE SIZE	PIPE O.D.	A	B	C	D	CROSS BOLT	MAX REC. LOAD LBS.	APPROX. WEIGHT PER 100
4	4.80	8	5/8	4-3/4	1-5/8	3/8	1430	213
6	6.90	10-3/16	3/4	5-3/4	1-3/4	1/2	1940	430
8	9.05	12-5/8	7/8	7	1-3/4	5/8	2000	664
10	11.05	15-7/16	7/8	8-5/8	2-1/4	3/4	3600	940
12	13.20	16-7/8	7/8	9	2-1/4	3/4	3800	1217
14	15.30	20-7/8	1	11-3/4	2-1/2	7/8	4200	1533
16	17.40	23-11/16	1	13-1/2	3-3/8	1	4600	2223
18	19.50	26-1/16	1	14-7/8	3-3/8	1-1/8	4800	2441
20	21.60	29-1/16	1-1/4	16-3/8	3-3/4	1-1/4	4800	4182
24	25.80	33-3/8	1-1/4	18-5/8	4	1-1/4	4800	5460